



Attachment B

Maps of the area the subject of the application

The Applicant attaches Deposited Plans and/or maps of the areas of land and waters covered by this application as described in Schedule A to the application.

Attachment	Area ¹	Map / relevant part	Page
B1	1	Crown Plan 8794.2030 showing Area 1 as Portion 953 (now identified as Lot 953 in Deposited Plan 752038)	8
B2	2	Crown Plan 7788.2030 showing Area 2 as Portion 2225 (now identified as Lot 2225 in Deposited Plan 752038)	10
B3	3	Crown Plan 7747.2030 showing Area 3 as Portion 2600 (now identified as Lot 2600 in Deposited Plan 752038)	12
B4	4	Deposited Plan 1285945	14
B5-7	5-7	Deposited Plan 869624	19

¹ Per Schedule A.

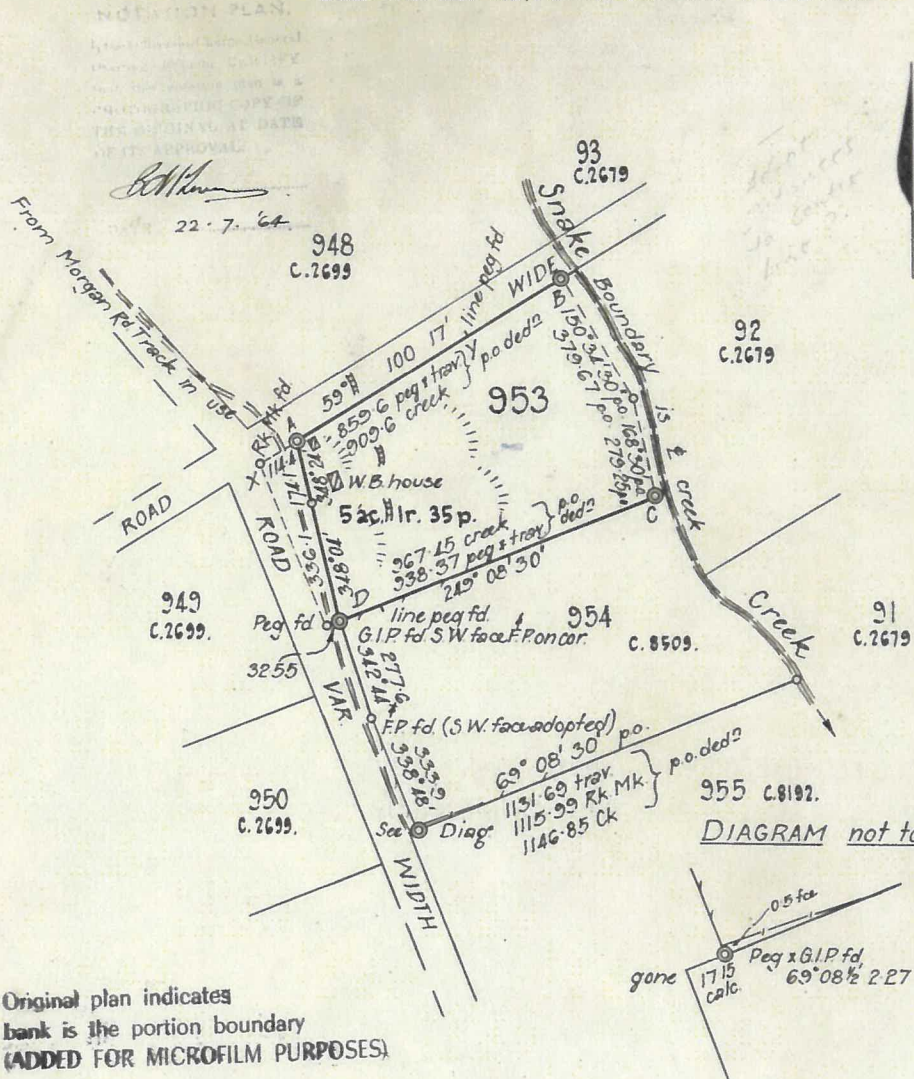


ATTACHMENT B1



A293

PLAN OF PORTION 953 PARISH MANLY COVE COUNTY CUMBERLAND
 LAND DISTRICT METROPOLITAN SHIRE WARRINGAH



PLAN MICROFILMED
 NO ADDITIONS OR AMENDMENTS TO BE MADE

Original plan indicates bank is the portion boundary (ADDED FOR MICROFILM PURPOSES)

Note: Steep sandstone formation, falling towards creek, poor sandy soil, timbered with gum, bloodwood, stringybark and thick scrub.

Charted on Head Office Maps

Surround Area : 5.29318 ac.
 Offset Area : +0.17660 ac.

CORNER	BEARING	FROM	DISTANCE	NO. ON TREE	Remarks
A	239° 17'	G.I.P.	2-27	peg 953	(only practical position)
B	238° 17'	D.H.W.	75.8	peg 953 R	(p.o.)
C	249° 08 1/2'	D.H.W.	37.58	peg 953, 954	(p.o.)
D	69° 08 1/2'	G.I.P.	2-27	sw. face of cor. (fd)	

SCALE 4 chains TO AN INCH
 All measurements shown in links
 AZIMUTH TAKEN FROM XY
 FIELD BOOK LD 4465 PAGES 33-36

John David Kershaw WALKER
 of SYDNEY
 a Surveyor registered under the Surveyors Act, 1929-1946, hereby certify that the survey represented in this plan is accurate and has been made under my immediate supervision in accordance with the Survey Practice Regulations, 1933, and the special requirements of the Department of Lands and was completed on 6-5-64.

Signature: *J.D. Walker*
 Surveyor registered under the Surveyors Act, 1929-1946.

TITLE LIMITED TO SURFACE AND TO A DEPTH OF 50 FT. BELOW THE SURFACE.
 Cancels Plan C. 7687. 2030.
~~Within R. 2716 from Occupation under Miners Right or Business License, Notified 26th Oct. 1960.~~
~~Portion 953 Special Lease 52 177 William John Pace now C.P. 66-3 7th February. Withdrawn.~~
~~" " 186422 Re Future Public Requirements Act 1912 Act~~
 Now C.P. 69-31 of Dec 10th

NOTATION PLAN

This space for office use only.

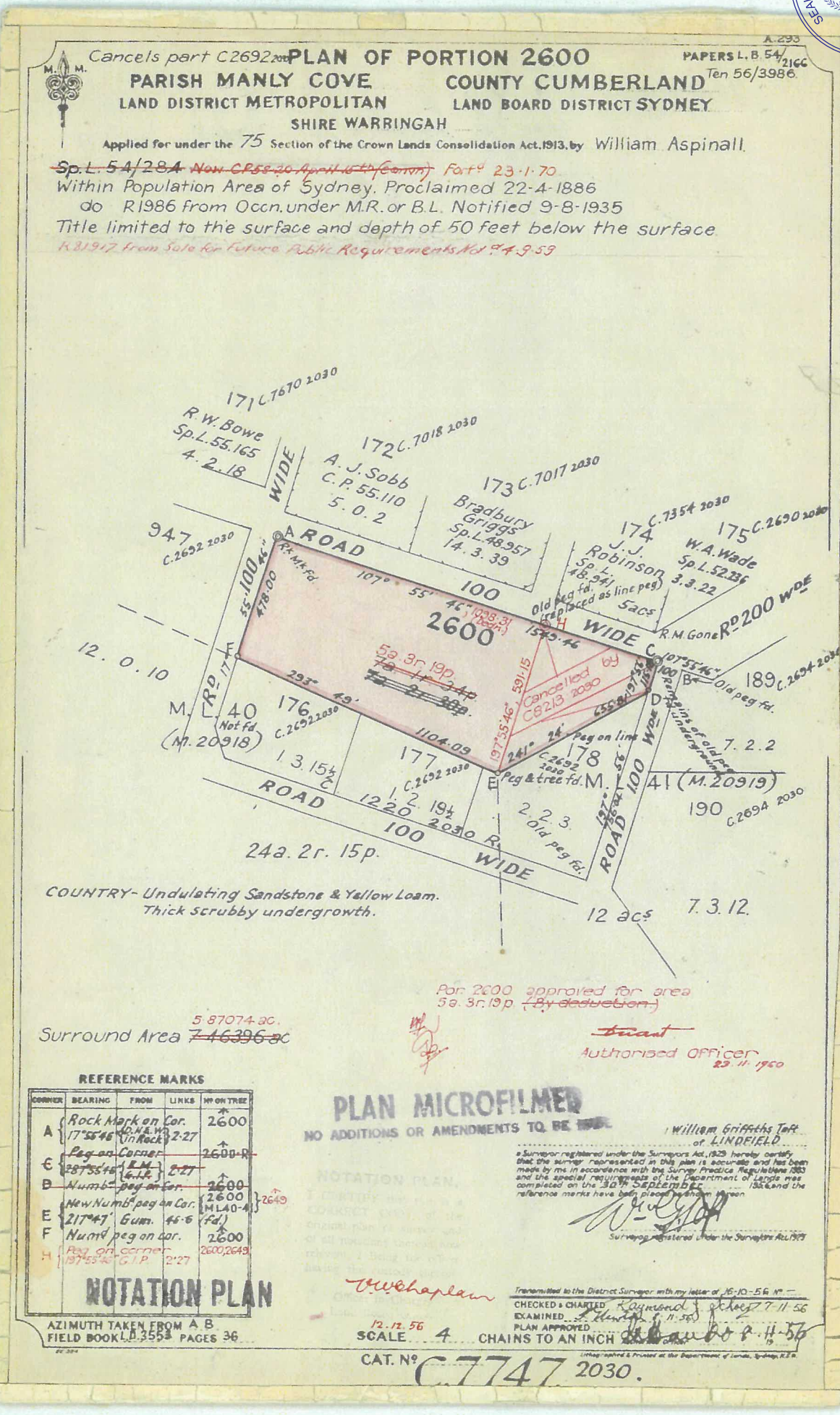
CHECKED & CHARTED *Stuyville* 21st May, 1964.
 PLAN APPROVED *R. J. Keenan*
 Authorized Officer: *D. G. Kirby* 1964



ATTACHMENT B2



ATTACHMENT B3



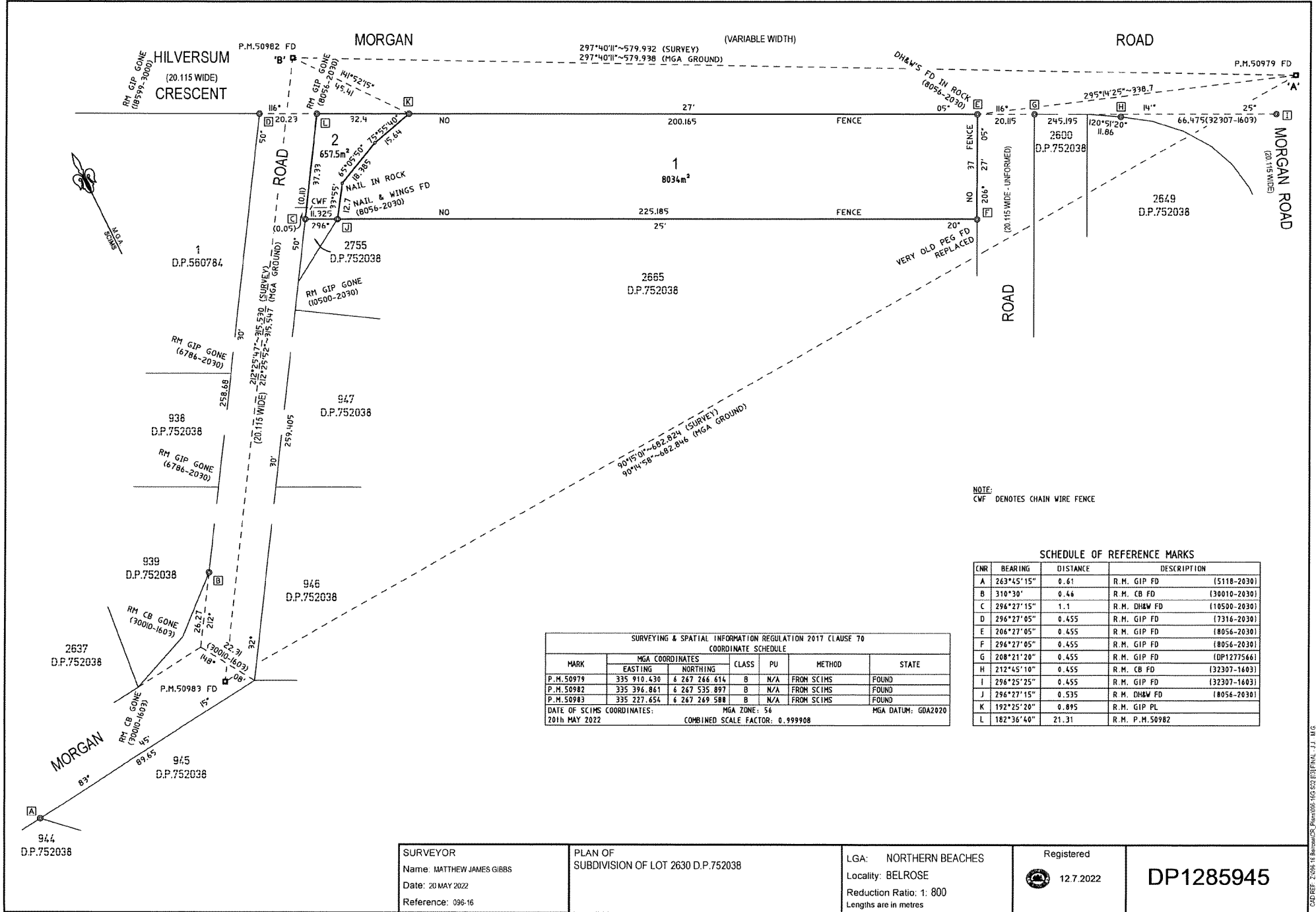


ATTACHMENT B4

PLAN FORM 2 (A2)

WARNING: CREASING OR FOLDING WILL LEAD TO REJECTION

SHEET 1 OF 1 SHEETS



NOTE: CWF DENOTES CHAIN WIRE FENCE

SCHEDULE OF REFERENCE MARKS

CNR	BEARING	DISTANCE	DESCRIPTION
A	263°45'15"	0.61	R. M. GIP FD (5118-2030)
B	310°30"	0.46	R. M. CB FD (30010-2030)
C	296°27'15"	1.1	R. M. DH&W FD (10500-2030)
D	296°27'05"	0.455	R. M. GIP FD (7316-2030)
E	206°27'05"	0.455	R. M. GIP FD (8056-2030)
F	296°27'05"	0.455	R. M. GIP FD (8056-2030)
G	208°21'20"	0.455	R. M. GIP FD (DP1277566)
H	212°45'10"	0.455	R. M. CB FD (32307-1603)
I	296°25'25"	0.455	R. M. GIP FD (32307-1603)
J	296°27'15"	0.535	R. M. DH&W FD (8056-2030)
K	192°25'20"	0.895	R. M. GIP PL
L	182°36'40"	21.31	R. M. P. M. 50982

SURVEYING & SPATIAL INFORMATION REGULATION 2017 CLAUSE 70
COORDINATE SCHEDULE

MARK	MGA COORDINATES		CLASS	PU	METHOD	STATE
	EASTING	NORTHING				
P. M. 50979	335 910.430	6 267 766.614	B	N/A	FROM SCIMS	FOUND
P. M. 50982	335 396.861	6 267 535.897	B	N/A	FROM SCIMS	FOUND
P. M. 50983	335 227.654	6 267 269.588	B	N/A	FROM SCIMS	FOUND

DATE OF SCIMS COORDINATES: 2016 MAY 2022
MGA ZONE: 56
COMBINED SCALE FACTOR: 0.999908
MGA DATUM: GDA2020

SURVEYOR Name: MATTHEW JAMES GIBBS Date: 20 MAY 2022 Reference: 096-16	PLAN OF SUBDIVISION OF LOT 2630 D.P.752038	LGA: NORTHERN BEACHES Locality: BELROSE Reduction Ratio: 1: 800 Lengths are in metres	Registered 12.7.2022	DP1285945
---	---	--	-------------------------	------------------

Req:R922956 /Doc:DP 1285945 P /Rev:12-Jul-2022 /NSW LRS /Prt:22-Dec-2022 14:34 /Seq:1 of 4
 © Office of the Registrar-General /Src:CrownLands /Ref:

G:\REF_2024\16 Dec 2022\NSD591\2024\008\DP1285945_P1.dwg - J.J. M.S.



ATTACHMENT B5-7

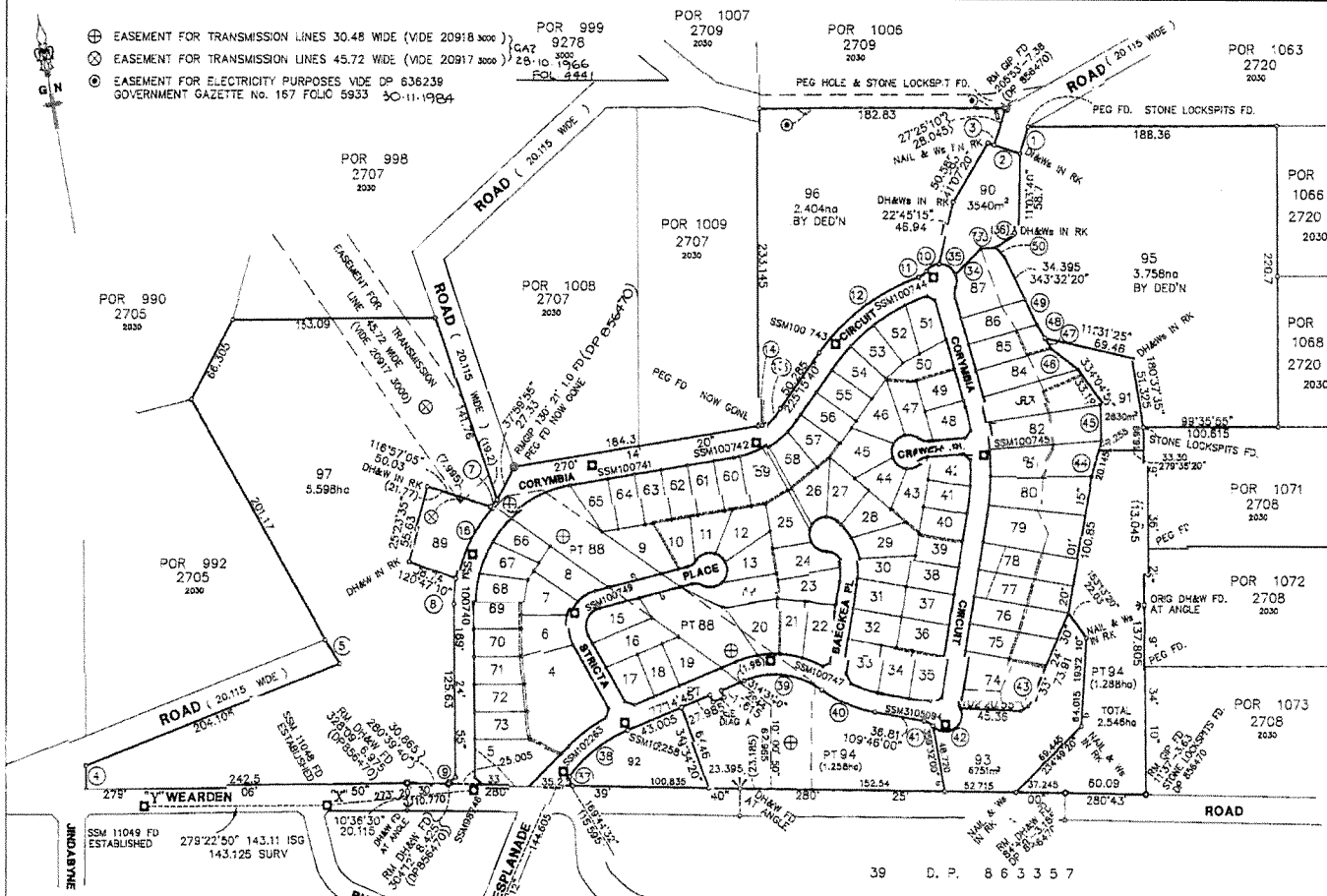
SIGNATURE AND SEALS ONLY.

CONTINUED FROM SIDE PANEL

PURSUANT TO SEC. 88B OF THE CONVEYANCING ACT 1919 IT IS INTENDED TO CREATE:

- 1. EASEMENT FOR DRAINAGE OF WATER 1.2 WIDE
2. EASEMENT FOR DRAINAGE OF WATER VARIABLE WIDTH
3. RIGHT OF ACCESS & EASEMENT FOR SERVICES VARIABLE WIDTH
4. RESTRICTION ON USE
5. RESTRICTION ON USE
6. RESTRICTION ON USE
7. RESTRICTION ON USE
8. POSITIVE COVENANT
9. RESTRICTION ON USE

SIGNED BY ME WILLIAM SARKIS AS DELEGATE OF THE N.S.W. LAND AND HOUSING CORPORATION AND I HEREBY DECLARE THAT I HAVE NO NOTICE OF THE REVOCATION OF SUCH DELEGATION.



DP 869624
Registered: MA 28-74997
Title System: TORRENS
Purpose: SUBDIVISION
Ref. Map: U1860-2**
Last Plan: DP 856470
PLAN OF SUBDIVISION OF LOTS 100 TO 106 INCLUSIVE IN DP 856470
Lengths are in metres. Reduction Ratio 1:2500
LGA: WARRINGAH
Locality: OXFORD FALLS
Parish: MANLY COVE
County: CUMBERLAND
This is sheet 1 of my plan in 4 sheets.
DENNIS JAMES WATSON
WALLIS & MOORE PTY LTD
309 PITT ST SYDNEY ACN 000 971 719
DENNIS JAMES WATSON
WALLIS & MOORE PTY LTD
309 PITT ST SYDNEY ACN 000 971 719
DENNIS JAMES WATSON
WALLIS & MOORE PTY LTD
309 PITT ST SYDNEY ACN 000 971 719

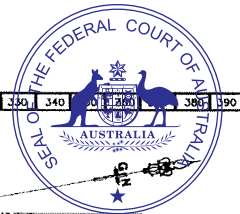
Form with sections for Crown Lands Office Approval, Council's Certificate, and Survey Practice Regulation 1996 - Clause 32 (2) ISG CO-ORDINATES.

Table with columns: MARK, EASTING, NORTHING, ZONE, ACC. Contains survey coordinates for SSM 11049, 11048, 73175.

SSM TRAVERSE table with columns: SSM No., BEARING, DISTANCE. Lists traverse points for SSM 11049, 11048, 73175.

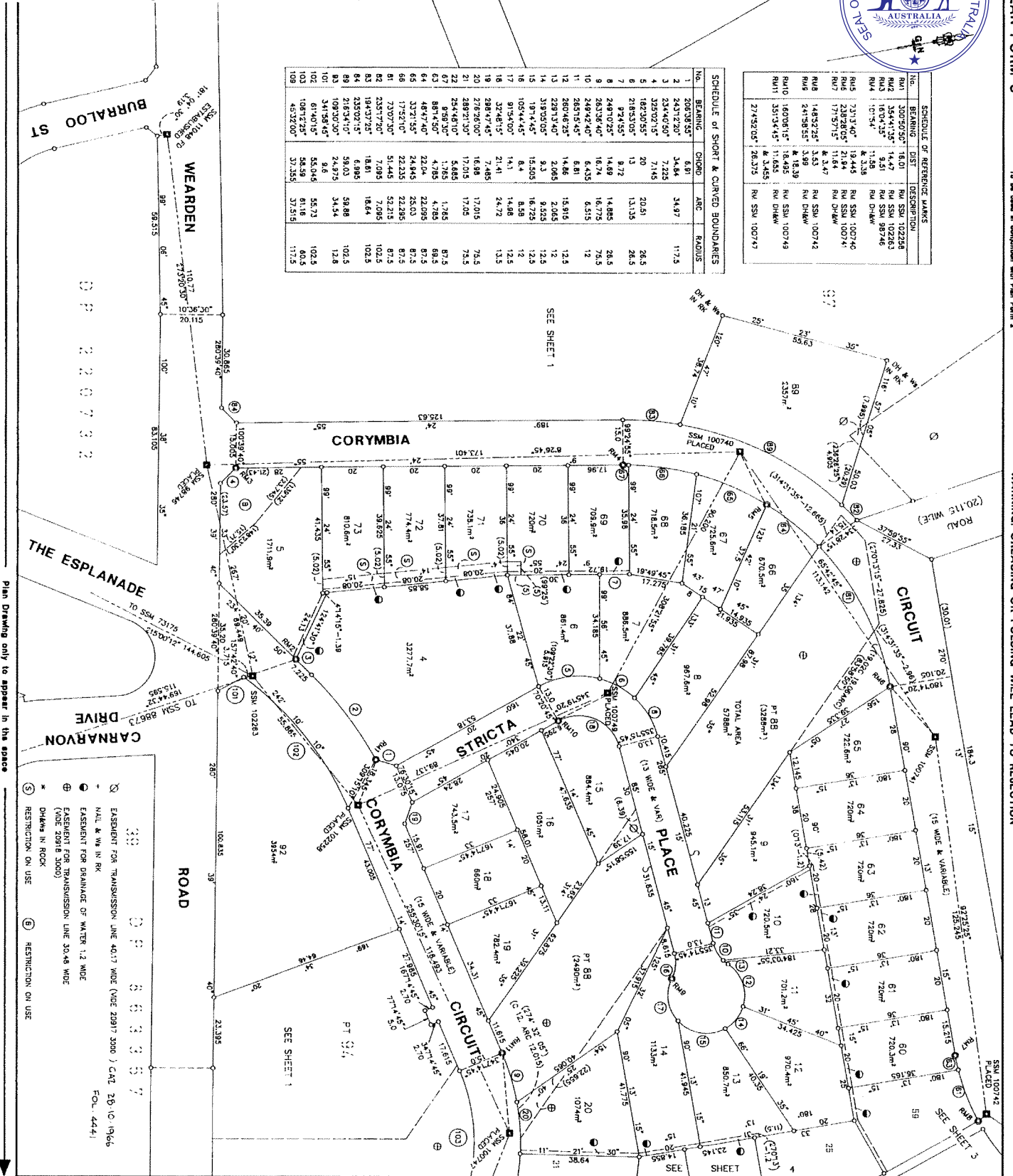
SCHEDULE OF SHORT & CURVED BOUNDARIES table with columns: No., BEARING, CHORD, ARC, RADIUS. Lists boundary details for lots 1-106.

PANEL FOR USE ONLY for statements of intention to dedicate public roads, create public reserves, easements, restrictions on the use of land or positive covenants.



No.	BEARING	DIST.	DESCRIPTION
RM1	300°50'50"	18.01	RM SSM 102236
RM2	354°41'35"	14.49	RM SSM 102263
RM3	167°04'35"	11.38	RM SSM 987746
RM4	107°54'	8.336	RM D'HAU
RM5	73°13'40"	19.445	RM SSM 100740
RM6	238°28'05"	21.94	RM SSM 100741
RM7	171°57'15"	11.64	RM D'HAU
RM8	148°52'30"	8.247	RM D'HAU
RM9	243°35'55"	3.39	RM D'HAU
RM10	160°08'15"	18.495	RM SSM 100743
RM11	351°34'45"	11.655	RM D'HAU
RM12	274°52'05"	26.375	RM SSM 100747

No.	BEARING	CHORD	ARC	RADIUS
1	206°38'55"	6.91	34.97	17.5
2	234°12'20"	34.64		
3	234°40'50"	7.225		
4	329°02'15"	7.145	20.51	26.3
5	162°30'55"	20		26.3
6	218°53'05"	13	131.35	26.3
7	9°24'55"	8.72		26.3
8	249°10'25"	14.69	14.885	26.3
9	263°38'40"	16.74	16.775	26.3
10	249°42'40"	6.453	6.515	12
11	263°15'45"	6.61	15.915	12.5
12	260°46'25"	1.666	2.005	12
13	228°13'40"	2.969	2.005	12.5
14	318°13'05"	19.305	18.253	12.5
15	109°44'45"	14.3	8.58	12.5
16	91°04'00"	14.3	14.88	12.5
17	320°49'15"	21.41	24.72	13.5
18	288°47'45"	7.485	16.98	74.5
19	228°26'00"	16.98	17.015	74.5
20	289°10'30"	17.015	17.05	74.5
21	284°48'10"	5.865	5.865	87.5
22	89°59'30"	4.785	1.785	87.5
23	89°59'30"	4.785	4.785	87.5
24	48°47'40"	22.64	22.095	87.5
25	137°1'45"	24.845	25.03	87.5
26	17°21'10"	22.235	22.285	87.5
27	7°20'30"	51.445	52.215	87.5
28	235°17'30"	7.095	7.095	102.5
29	194°37'25"	18.61	18.64	102.5
30	235°02'15"	6.995	59.88	102.5
31	216°34'10"	59.03	59.03	102.5
32	108°30'30"	24.975	34.54	12.8
33	341°58'45"	8.6	55.73	102.5
34	61°40'15"	55.045	55.73	102.5
35	108°12'30"	58.59	61.8	102.5
36	43°32'00"	57.355	57.515	117.5



Reduction Ratio 1: 600

Surveyors Reference: 19905/LI

General Manager/Authorized Person

For use where space is insufficient in my panel on Form 2

DP 869624

Registered: 28-7-1997

This is sheet 2 of my plan in 4 sheets dated 6th June 1997

Surveyor registered under Surveyors Act 1929

This is sheet 2 of this plan of 4 sheets covered by my Certificate No.

DP 869624

Registered: 28-7-1997

This is sheet 3 of my plan in 4 sheets dated 6th JUNE 1997

Surveyor registered under Surveyors Act 1929

This is sheet 3 of the plan of 4 sheets covered by my Certificate No. of

General Manager/Authorised Person

For use where space is insufficient in any panel on Plan Form 2.

Reduction Ratio 1: 800

SURVEYORS REFERENCE: 19905L1

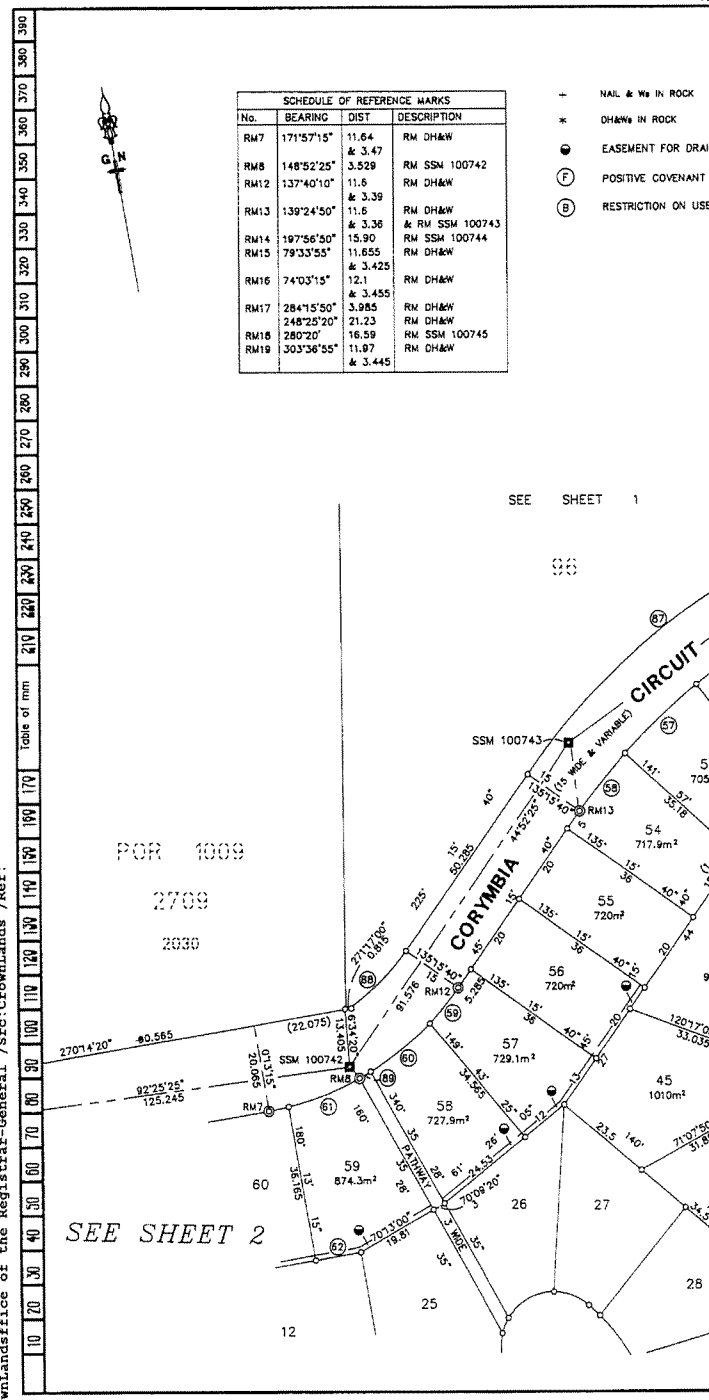
No.	BEARING	DIST	DESCRIPTION
RM7	171°57'15"	11.64 & 3.47	RM DH&W
RM8	148°52'25"	3.529	RM SSM 100742
RM12	137°40'10"	11.6 & 3.39	RM DH&W
RM13	139°24'50"	11.6 & 3.36	RM DH&W & RM SSM 100743
RM14	197°56'50"	15.90	RM SSM 100744
RM15	79°33'55"	11.655 & 3.425	RM DH&W
RM16	74°03'15"	12.1 & 3.455	RM DH&W
RM17	284°15'50"	3.985	RM DH&W
RM18	248°25'20"	21.23	RM DH&W
RM19	280°20'	16.59	RM SSM 100745
RM19	303°36'55"	11.97 & 3.445	RM DH&W

- + NAIL & Ws IN ROCK
- * DH&W IN ROCK
- EASEMENT FOR DRAINAGE OF WATER 1.2 WIDE
- (F) POSITIVE COVENANT
- (B) RESTRICTION ON USE

SCHEDULE of SHORT & CURVED BOUNDARIES

No.	BEARING	CHORD	ARC	RADIUS	No.	BEARING	CHORD	ARC	RADIUS
40	196°23'25"	18.205	18.21	174.5	67	9°59'30"	1.785	1.785	87.5
41	140°24'50"	6.985			68	353°37'15"	4.985	5.015	12.5
42	190°14'25"	19.24	19.25	174.5	69	0°45'05"	7.665	7.805	12
43	79°17'50"	10.84	11.21	12.5	70	181°9'20"	7		189.5
44	74°05'05"	6.4	6.58	12	71	14°05'15"	21	21.01	189.5
45	84°33'55"	.29			72	7°53'10"	20	20.01	189.5
46	137°13'25"	13.335	14.065	12.5	73	1°50'10"	20	20.01	189.5
47	194°05'35"	10.425	10.75	12.5	75	356°17'50"	16.625	16.63	189.5
48	243°23'35"	10.43	10.76	12.5	77	12°24'40"	7.665	7.805	12
49	274°34'05"	2.855			78	8°45'20"	9.48	9.725	12.5
50	295°03'00"	8.4	8.58	12	79	94°57'50"	11.56		
51	291°47'35"	10.085	10.38	12.5	80	148°23'20"	8.55	52.215	87.5
52	176°39'15"	17.485	17.495	174.5	81	73°07'50"	51.445	52.215	87.5
53	227°27'25"	6.805			82	235°17'20"	7.095	7.095	102.5
54	77°00'00"	17	17.01	138.5	83	194°37'25"	18.61	18.64	102.5
55	127°40'05"	6.93			84	235°02'15"	6.995		
56	67°40'50"	28	28.05	138.5	85	250°51'05"	10.91	11.29	12.5
57	57°09'55"	23	23.025	138.5	86	242°31'15"	7.235	7.35	12
58	48°48'25"	17.135	17.145	138.5	87	242°39'40"	91.805	93.235	153.5
59	49°39'00"	10.635	10.645	69.5	88	235°19'15"	19.04	19.14	54.5
60	61°28'45"	18	18.05	69.5	89	250°09'20"	3.0	3.0	69.5
61	78°50'00"	18	18.05	69.5	90	311°35'50"	14.295	15.217	12.5
62	270°31'15"	10.855							
63	88°14'50"	4.785	4.785	69.5					
64	48°47'40"	22.04	22.095	87.5					
65	33°21'55"	24.945	25.03	87.5					
66	175°21'0"	22.235	22.295	87.5					

Reg:R214178 /Doc:DP 0869624 P /Rev:29-Aug-1997 /NSW LRS /Pgs:ALL /Prt:06-Mar-2023 12:13 /Seq:3 of 4
© Crownland office of the Registrar-General /Src:Crownlands /Ref:



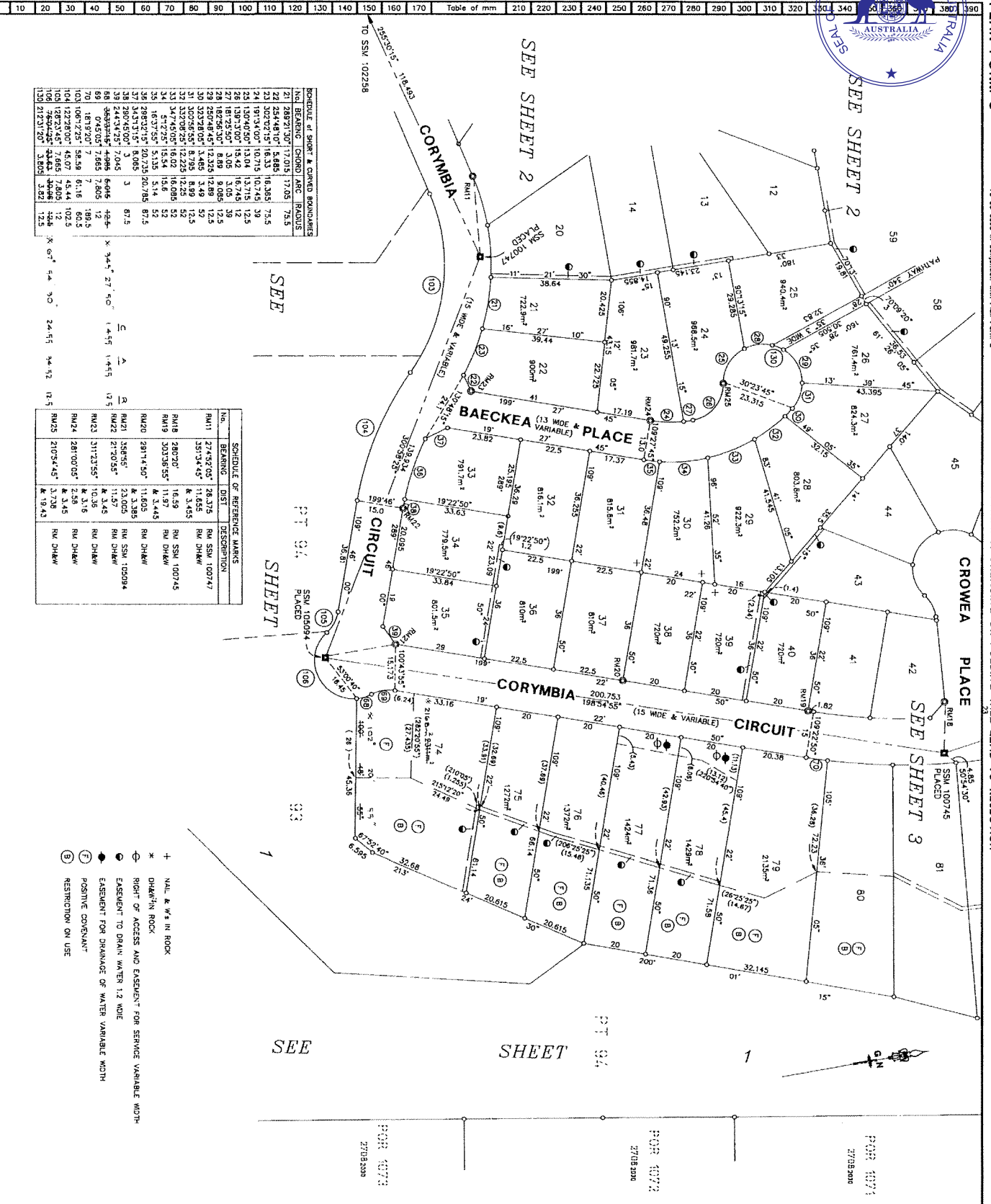


PLAN FORM 3

To be used in conjunction with Plan Form 2

WARNING: CREASING OR FOLDING WILL LEAD TO REFLECTION

OFFICE USE ONLY



SCHEDULE OF BOUNDARY & CORNER MONUMENTS

Lot	Bearing	Distance	Corner	Monument
1	271° 44' 00"	15.485	1	79.5
2	207° 07' 15"	16.53	1	79.5
3	191° 54' 00"	10.715	1	79.5
4	130° 40' 50"	13.014	1	79.5
5	130° 40' 50"	13.014	1	79.5
6	130° 40' 50"	13.014	1	79.5
7	130° 40' 50"	13.014	1	79.5
8	130° 40' 50"	13.014	1	79.5
9	130° 40' 50"	13.014	1	79.5
10	130° 40' 50"	13.014	1	79.5
11	130° 40' 50"	13.014	1	79.5
12	130° 40' 50"	13.014	1	79.5
13	130° 40' 50"	13.014	1	79.5
14	130° 40' 50"	13.014	1	79.5
15	130° 40' 50"	13.014	1	79.5
16	130° 40' 50"	13.014	1	79.5
17	130° 40' 50"	13.014	1	79.5
18	130° 40' 50"	13.014	1	79.5
19	130° 40' 50"	13.014	1	79.5
20	130° 40' 50"	13.014	1	79.5
21	130° 40' 50"	13.014	1	79.5
22	130° 40' 50"	13.014	1	79.5
23	130° 40' 50"	13.014	1	79.5
24	130° 40' 50"	13.014	1	79.5
25	130° 40' 50"	13.014	1	79.5
26	130° 40' 50"	13.014	1	79.5
27	130° 40' 50"	13.014	1	79.5
28	130° 40' 50"	13.014	1	79.5
29	130° 40' 50"	13.014	1	79.5
30	130° 40' 50"	13.014	1	79.5
31	130° 40' 50"	13.014	1	79.5
32	130° 40' 50"	13.014	1	79.5
33	130° 40' 50"	13.014	1	79.5
34	130° 40' 50"	13.014	1	79.5
35	130° 40' 50"	13.014	1	79.5
36	130° 40' 50"	13.014	1	79.5
37	130° 40' 50"	13.014	1	79.5
38	130° 40' 50"	13.014	1	79.5
39	130° 40' 50"	13.014	1	79.5
40	130° 40' 50"	13.014	1	79.5
41	130° 40' 50"	13.014	1	79.5
42	130° 40' 50"	13.014	1	79.5
43	130° 40' 50"	13.014	1	79.5
44	130° 40' 50"	13.014	1	79.5
45	130° 40' 50"	13.014	1	79.5
46	130° 40' 50"	13.014	1	79.5
47	130° 40' 50"	13.014	1	79.5
48	130° 40' 50"	13.014	1	79.5
49	130° 40' 50"	13.014	1	79.5
50	130° 40' 50"	13.014	1	79.5
51	130° 40' 50"	13.014	1	79.5
52	130° 40' 50"	13.014	1	79.5
53	130° 40' 50"	13.014	1	79.5
54	130° 40' 50"	13.014	1	79.5
55	130° 40' 50"	13.014	1	79.5
56	130° 40' 50"	13.014	1	79.5
57	130° 40' 50"	13.014	1	79.5
58	130° 40' 50"	13.014	1	79.5
59	130° 40' 50"	13.014	1	79.5
60	130° 40' 50"	13.014	1	79.5
61	130° 40' 50"	13.014	1	79.5

SCHEDULE OF REFERENCE MARKS

No.	Bearing	Dist.	Description
RM1	271° 44' 00"	28.375	RM SSM 100747
RM2	351° 34' 45"	11.655	RM DHAW
RM3	271° 44' 00"	16.59	RM SSM 100745
RM4	207° 07' 15"	11.97	RM DHAW
RM5	191° 54' 00"	11.605	RM DHAW
RM6	130° 40' 50"	13.014	RM SSM 100994
RM7	130° 40' 50"	13.014	RM DHAW
RM8	130° 40' 50"	13.014	RM DHAW
RM9	130° 40' 50"	13.014	RM DHAW
RM10	130° 40' 50"	13.014	RM DHAW
RM11	130° 40' 50"	13.014	RM DHAW
RM12	130° 40' 50"	13.014	RM DHAW
RM13	130° 40' 50"	13.014	RM DHAW
RM14	130° 40' 50"	13.014	RM DHAW
RM15	130° 40' 50"	13.014	RM DHAW
RM16	130° 40' 50"	13.014	RM DHAW
RM17	130° 40' 50"	13.014	RM DHAW
RM18	130° 40' 50"	13.014	RM DHAW
RM19	130° 40' 50"	13.014	RM DHAW
RM20	130° 40' 50"	13.014	RM DHAW
RM21	130° 40' 50"	13.014	RM DHAW
RM22	130° 40' 50"	13.014	RM DHAW
RM23	130° 40' 50"	13.014	RM DHAW
RM24	130° 40' 50"	13.014	RM DHAW
RM25	130° 40' 50"	13.014	RM DHAW

- + NAIL & W'S IN ROCK
- * DRUM/IN ROCK
- ⊖ RIGHT OF ACCESS AND EASEMENT FOR SERVICE VARIABLE WIDTH
- ⊕ EASEMENT TO DRAIN WATER 1.2 WIDE
- ⊖ EASEMENT FOR DRAINAGE OF WATER VARIABLE WIDTH
- ⊕ POSITIVE COVENANT
- ⊖ RESTRICTION ON USE

Reduction Ratio 1: 800

Surveyors Reference: 19804.

General Manager/Authorised Person

For use where space is insufficient in my plan on Plan Form 2.

DP 869624

Registered: 177 28-7-1977

This is sheet 4 of my plan in 4 sheets dated 6th JUNE 1997

Surveyor registered under Surveyors Act 1929

This is sheet 4 of the plan of 4 sheets covered by my Certificate No. of